

muvi™

User Manual

KX-1

NPNG



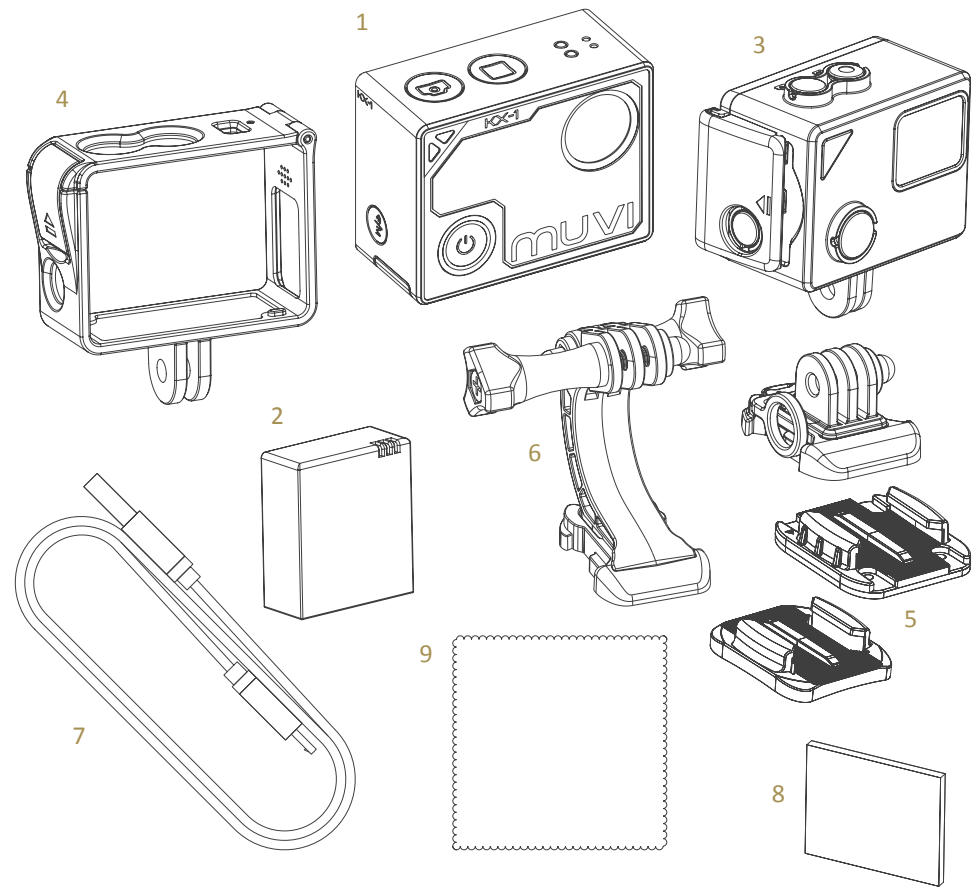
VCC-008-KX1-NPNG

veho®

Contents

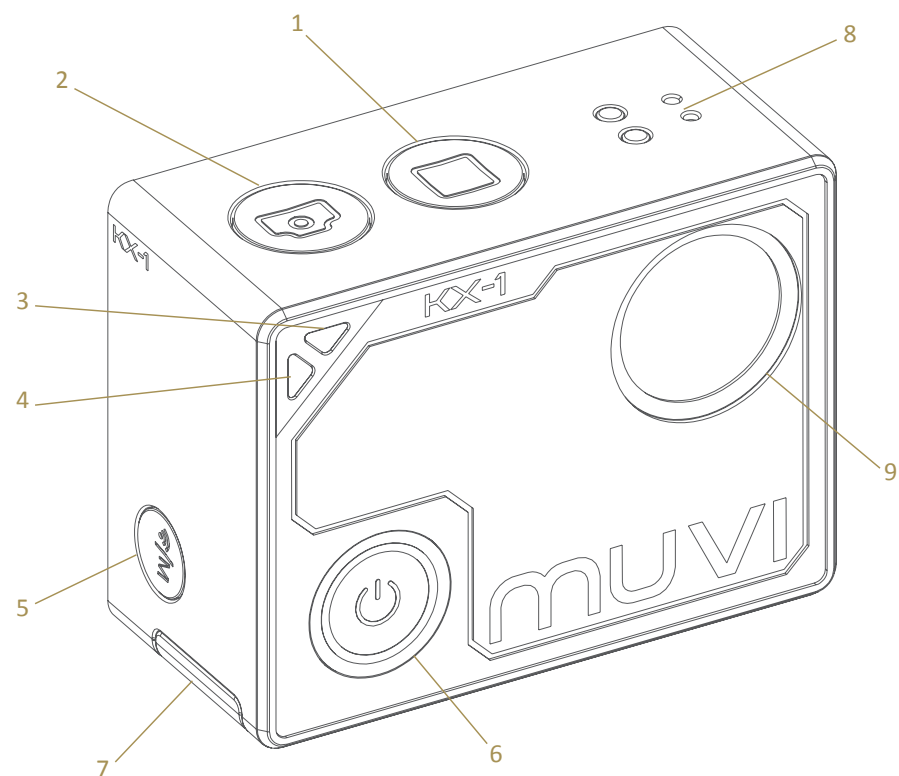
1. What's in the box?

What's in the box	3
Guide to controls	4
Description of LED indicators	6
Charging and installing the battery	7
Getting started	8
Touch controls	9
Viewing and transferring files	16
Download and install app	17
Specifications	18
Accessories	20
Camcorder maintenance tips	21

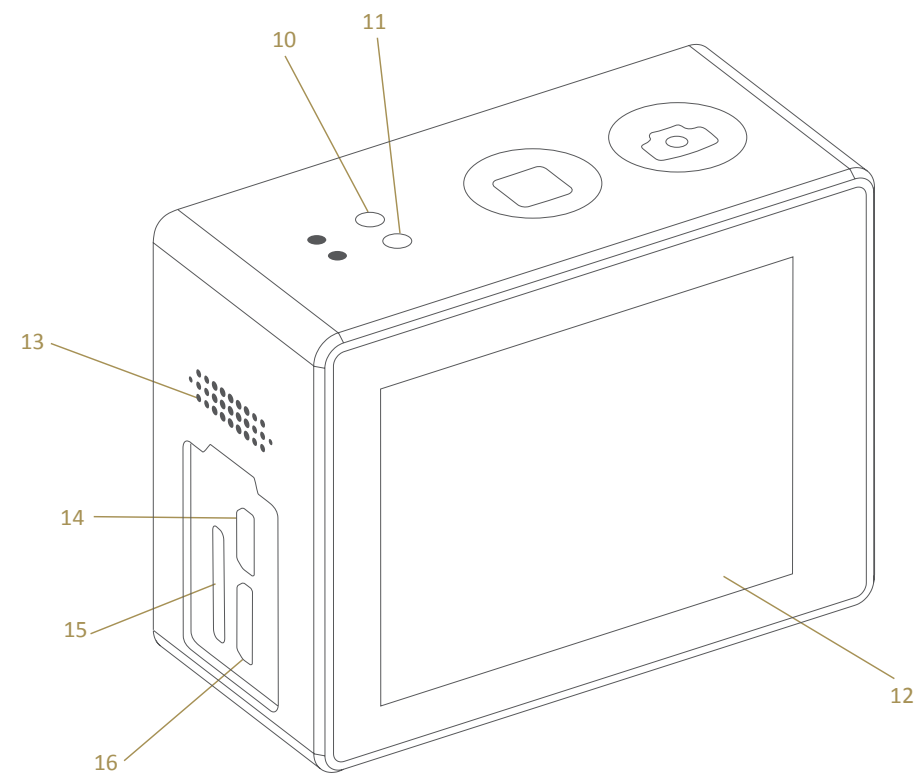


- | | |
|----------------------------------|---------------------|
| 1. KX-1 NPNG Camera | 7. USB cable |
| 2. Battery | 8. Anti-fog inserts |
| 3. Waterproof case | 9. Lens cloth |
| 4. Quick release frame | 10. Decals |
| 5. Curved & flat adhesive mounts | 11. microSD card |
| 6. Helmet Mount | 12. User manual |

2. Guide to controls



- | | |
|-----------------------------------|-------------------------------|
| 1. Stop Recording Button | 6. Power Button/Record Button |
| 2. Shutter Button | 7. Battery Cover |
| 3. Green Indicator Light (L1) | 8. Microphone |
| 4. Blue WiFi Indicator Light (L2) | 9. Wide Angle Lens |
| 5. WiFi Button | |



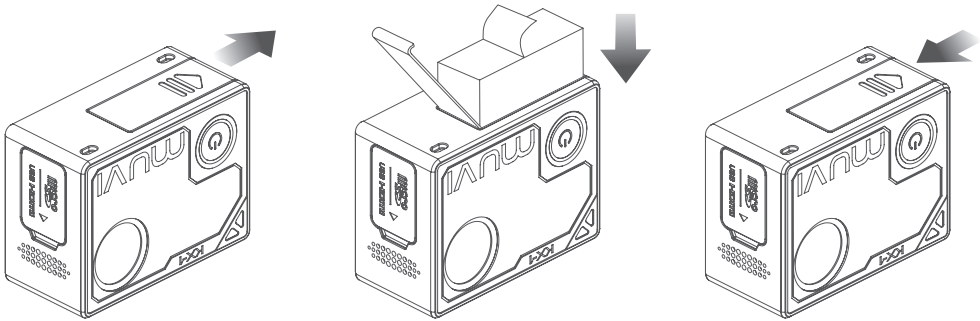
- | | |
|--------------------------------|-----------------------|
| 10. Green Indicator Light (L1) | 14. Micro HDMI Port |
| 11. Red Indicator Light (L3) | 15. microSD Card Slot |
| 12. Built-in Touch LCD Screen | 16. Micro USB Port |
| 13. Speaker | |

3. Description of LED indicators

Status	Green Light (L1)	Blue Light (L2)	Red Light (L3)
Recording Video	Flashing		Solid
Recording Audio	Flashing		Solid
Taking Photo	Single Flash		Solid
microSD Card Full	Solid		Solid
WiFi On		Flashing	Solid
Charging			Flashing
Power On			Solid
Fully Charged			Solid
Low Battery			Solid
Data transmission			Solid

4. Installing and charging the battery

Slide the battery cover as shown, then insert the battery and close the cover.

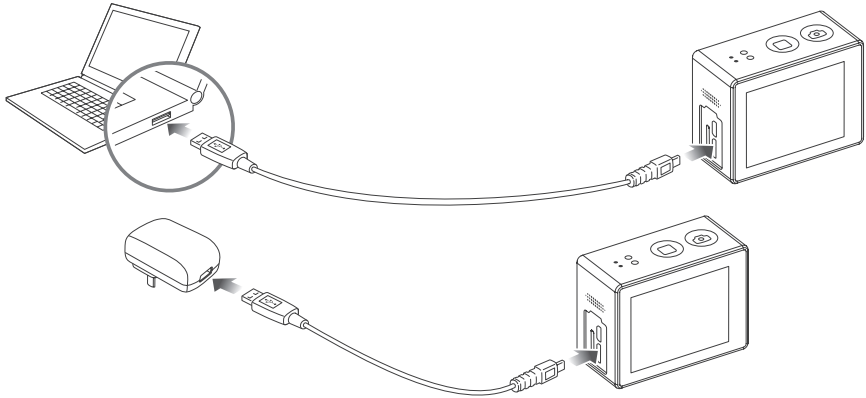


To charge your battery, connect the supplied USB cable to a computer or 5V/2A USB plug.

The **red indicator light (L3)** will flash when charging the battery. When it is fully charged, the light will remain solid.

Battery life - Up to 2 hours, depending on the resolution and framerate used.

Charging time - Up to 2 hours, depending on the charger used.



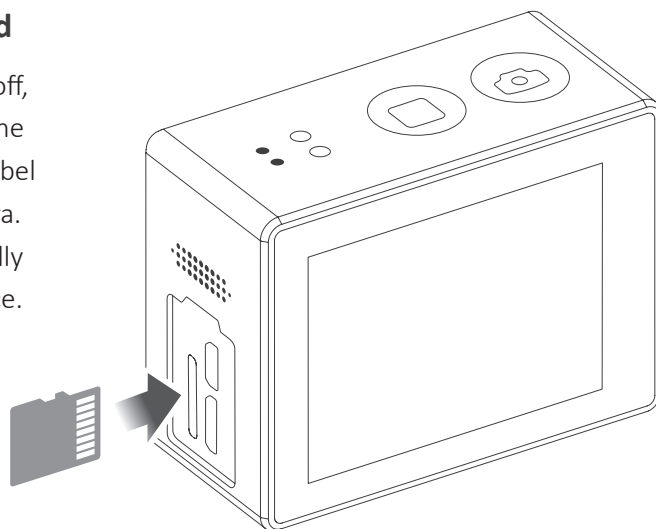
Please note: To prevent damage, to the battery, remove when operating the camera for long periods whilst plugged into a power source.

5. Getting started

Inserting a microSD card

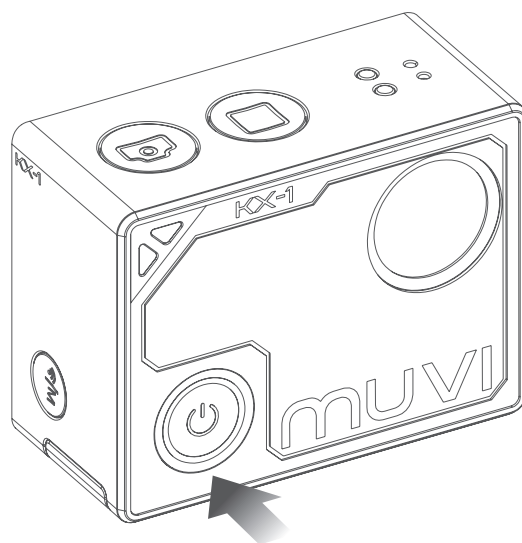
When the camera is turned off, slide the microSD card into the microSD card slot with the label facing the front of the camera. When the microSD card is fully inserted, it will click into place.

A microSD card with UHS class 3 (U3) speed is recommended.



Turning the camera on/off

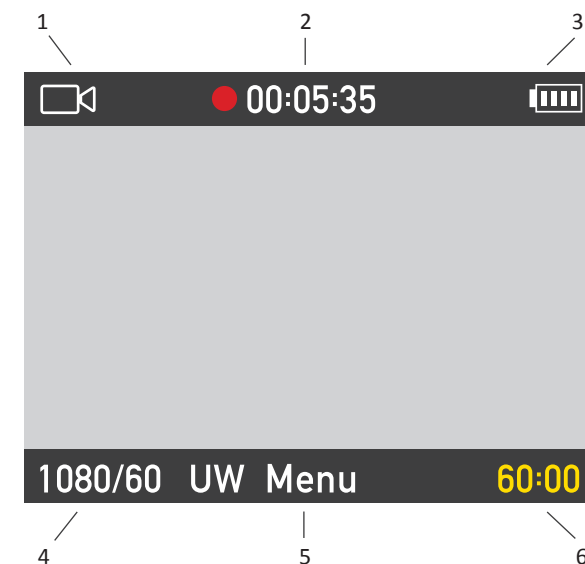
Press and hold the power/record button for roughly 3 seconds to turn the camera on or off.



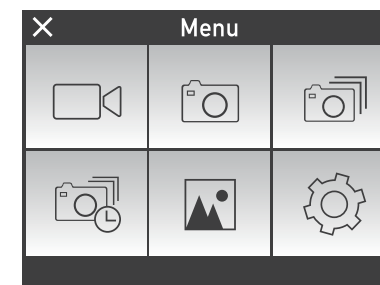
6. Touchscreen controls

Default View

1. Indicates Modes Selected
2. Record Time
3. Battery Level
4. Video Resolution & Viewing Angle
5. Enter Main Menu
6. Remaining Record Time



Main Menu



Tap the "X" in the top left-hand corner to exit main menu.

	Tap the Video Icon to enter Video Mode
	Tap the Camera Icon to enter Photo Mode
	Tap the Burst Icon to enter Burst Photo Mode
	Tap the Interval Shooting Icon to enter Interval Shooting Mode
	Tap the Library Icon to view photos and videos
	Tap the Setting Icon to change settings

Video Mode

×	Video Settings
	Video Modes >
	Resolution >
	Viewing Angle >

×	Video Settings
	Bit Rate >
	Auto Overwrite <input type="checkbox"/>
	180° Image Flip <input checked="" type="checkbox"/>

×	Video Settings
	Time Stamp <input checked="" type="checkbox"/>

Function	Description
Video Modes	Record: Select to record video with audio
	Video Only: Select to record video only
	Audio Only: Select to record audio only
	Slow Motion: Select to record a slow motion video
	Interval Record: Set time for Interval Record - 1s/2s/5s/10s/30s/60s. To take a sequence of frames at set intervals to record changes that take place slowly over time. (Time-lapse)
	Auto Record: Set time for Auto Record - 5s/10s/20s
	Video + Photo: Set time to take photo(s) during video recording Manual/5s/10s/30s/60s
Resolution	Select Video Resolution: 4k@10fps, 2.7k@15fps, 1440P@30fps, 1080P@60fps/30fps, 720P@120fps/60fps, 480p@240fps
Viewing Angle	Select Viewing Angle: Ultra Wide, Wide, Medium
Bit Rate	Select Bit Rate: High, Normal
Auto Overwrite	Turn Auto Overwrite: On/Off When Auto Overwrite is turned on, it will record over existing files when microSD card is full
180° Image Flip	Turn Auto Image Rotation: On/Off Turn Auto Image Rotation on to have the camera automatically adjust right side up when mounted upside down
Time Stamp	Turn Auto Time Stamp: On/Off Turn Time Stamp on to show the current day, month, year, and time in the recorded file

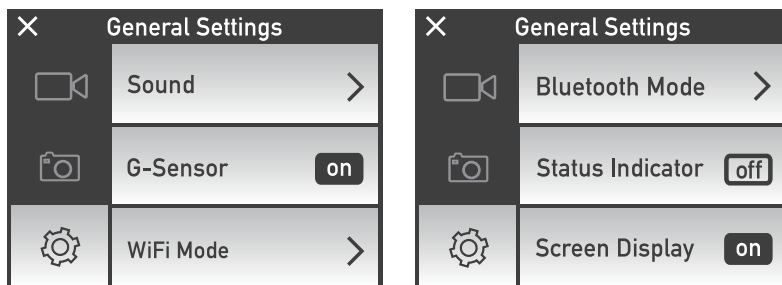
Please note: We recommend using the camera at 1080p/60fps for the best results.

Photo Mode

×	Photo Settings
	Photo Modes >
	Resolution >
	Time Stamp <input checked="" type="checkbox"/>

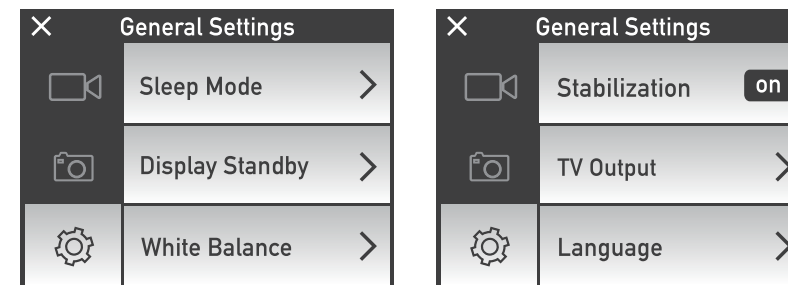
Function	Description
Photo Modes	Tap Shutter: If turned on, tap screen to take a picture
	Burst: Select Burst Mode: 3 photos/1s, 5 photos/1s, 10 photos/1s
	Interval Shooting: Sets Frequency for pics to be taken: 1s, 2s, 3s, 5s, 10s, 30s, 60s
	Self Timer: Pics will be taken automatically after setting time: 2s, 3s, 5s, 10s
Resolution	Select Image Resolution: 16MP (4608x3456 4:3), 12MP (4000x3000 4:3), 8MP (3200x2400 4:3)
Time Stamp	Turn Time Stamp: On/Off Turn Time Stamp on to show the current day, month, year, and time in the file

Settings Mode



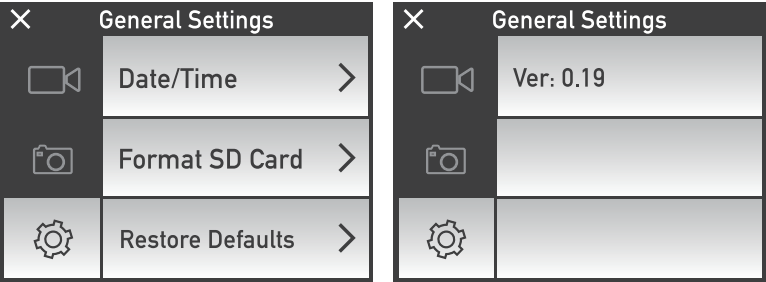
Function	Description
Sound	Turn Sound on to hear beeping indicators
G-Sensor	Turn G-Sensor on to start recording (in video mode) when camera moves. Camera will stop recording when moving stops after 3 minutes.
WiFi Mode	On your mobile device, turn the Wi-Fi on and download the Veho Muvi app from the Google Play or Apple Store. Press and hold the Wi-Fi Button for 3 seconds to turn on the camera Wi-Fi. Go to Wi-Fi settings on your mobile device, find and select the Muvi-KX1/2, then enter the password: VehoMuvi. Launch the Veho Muvi app and click on the Camera button in the app.
Bluetooth Mode	Select search mode to connect with a selfie stick
Status Indicator	Turn on to see camera status functions
Screen Display	Turn on to see Camera Mode, Record Time, Power Level, Resolution, Viewing Angle, Menu Button, and Remaining Record Time.

Settings Mode

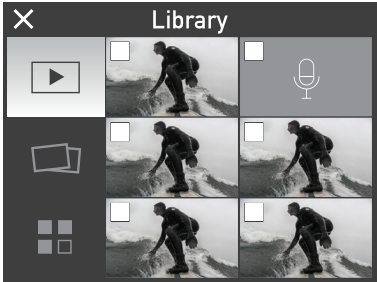


Function	Description
Sleep Mode	Camera will enter power-saving state when no user activity has been sensed for a certain time: Off, 2 mins, 5 mins, 10 mins.
White Balance	Select the appropriate setting according to the lighting conditions of the application scenario.
Stabilization	Digital image stabilization: on/off
Display Standby	Display will be automatically turned off when no user activity has been sensed for a certain time: Off, 10 secs, 30 secs, 60 secs.
TV Output	Select PAL or NTSC
Language	Select Traditional Chinese, English (default), German, French, Italian, Spanish, Portuguese, Dutch, Turkish, Russian, Hungarian, Danish, Finnish, Norwegian, Sweden, Greek, Polish, Czech.

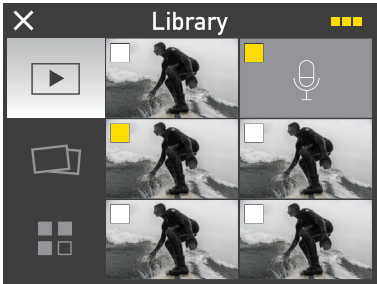
Settings Mode



Library



- Displays all video & audio files
- Displays all photo files
- Displays all video, audio & photo files



Tap on thumbnail to open any file.

Click on the square on the top left-hand corner of the thumbnail to select each file.

After selecting 1 or more files, three yellow option squares (■■■) appear in the top right-hand corner.

Tap on the three yellow option squares (■■■) to delete and lock the files selected.

Tap the “X” in the top left-hand corner to exit the library.

8. Viewing and transferring files

Copying files to a computer

1. Connect the Micro USB cable to the camera and a computer, with the microSD card in the camera.
2. Turn the camera on.
3. Go to “My Computer”/“This PC” on Windows or the desktop on Mac OS.
4. Open the SD card folder and copy the files to your computer.

Viewing Photos and Videos on a TV

To playback photos/videos on a TV, check the Muvi is set to the correct mode (PAL/NTSC) and then enter playback mode on the camera. Then connect a HDMI cable to the camera from the TV.

9. Using the Wi-Fi app.

1. On your mobile device, turn the Wi-Fi on and download the Veho Muvi app from the Google Play or Apple Store.
2. Press and hold the Wi-Fi Button for 3 seconds to turn on the camera Wi-Fi.
3. Go to Wi-Fi settings on your mobile device, find and select the Muvi KX-1/KX-2, then enter the **password: VehoMuvi**.
4. Launch the Veho Muvi and click on the Camera button in the app.

Please note: The G-Sensor and Wi-Fi cannot be enabled simultaneously.



10. Specifications

Camera

Lens Angle	140°
Aperture	2.5f
Screen	1.8" Touchscreen integrated

Video

Video Resolution	4k@10fps, 2.7k@15fps, 1440P@30fps, 1080P@60fps/30fps, 720P@120fps/60fps, 480p@240fps
Video Mode	Record, Video Only, Audio Only, Slow Motion, Interval Record, Auto Record, Video + Photo
Auto Record	5s, 10s, 20s
Self Timer	2s, 3s, 5s, 10s
Interval Record	1s, 2s, 5s, 10s, 30s, 60s

Photo

Photo Resolution	16MP, 12MP, 8MP
Photo Mode	Tap Shutter, Burst, Self Timer, Interval Shooting
Burst Mode	3 photos/1s, 5 photos/1s, 10 photos/1s
Photo & Video	5s, 10s, 30s, 60s or Manual
Self Timer	2s, 3s, 5s, 10s
Interval Shooting	1s, 2s, 3s, 5s, 10s, 30s, 60s

Power & Battery

Battery	1050mAh
Battery Life	Up to 2 hours, depending on the resolution and framerate used
Charging Time	Up to 2 hours, depending on the charger used

Other

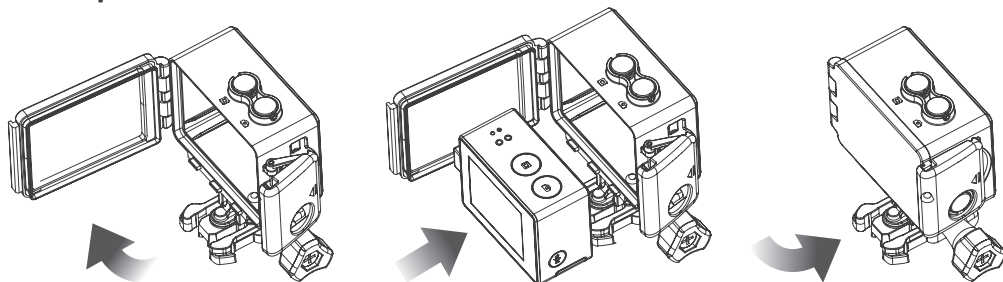
Interface	Micro USB, Micro HDMI, microSD
Memory	microSD card (up to 64GB)
Operating Temperature	0°C to 60°C
Storage Temperature	-20°C to 60°C
Weight	67g
Dimension	52mm x 26mm x 40mm

Functions

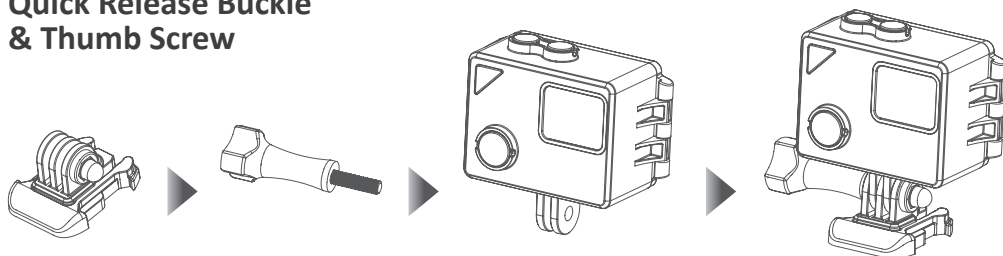
Other Functions	Built-In WiFi, Built-In Bluetooth, 4x Digital Zoom, Video Loop, Auto Record, 180° Image Flip, Sleep Mode (2min, 5min, 10min)
-----------------	--

11. Accessories

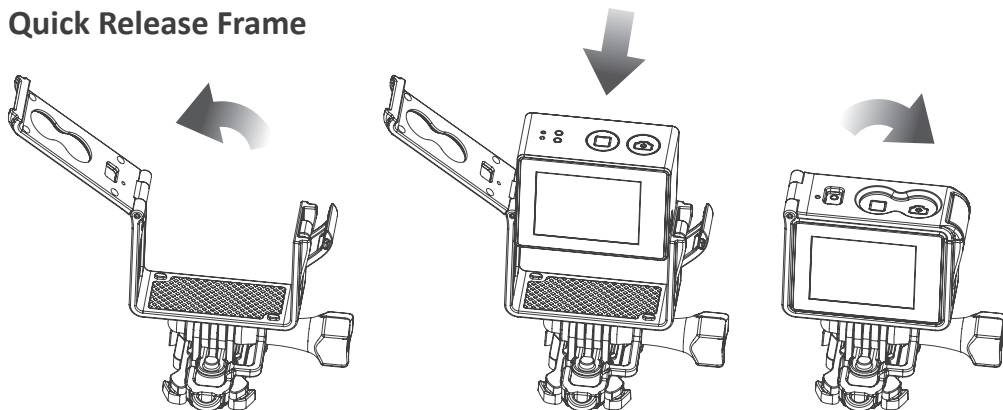
Waterproof Case



Quick Release Buckle & Thumb Screw



Quick Release Frame



12. Camera maintenance tips

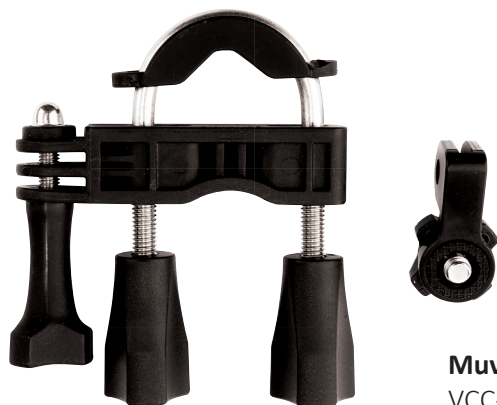
- Please charge the battery every 3 months to maintain battery life.
- To view or upload videos/images at the best quality, copy the files to your computer first.
- If your video files are corrupt, try reformatting the microSD card with the camera. To do this, go into the settings mode, locate the format SD card option and press confirm.
- It is normal for the camera to become warm during use, the camera will turn off automatically if it overheats.
- Turn off the camera before inserting the microSD card.
- While it is possible to use the camera while the battery is charging, you run the risk of shortening the battery life and damaging it.

Other Veho Products



Muvi Chest Harness Mount
VCC-A016-HSM

**Pebble Endurance 15,000mAh
Portable Power Bank**
VPP-008-E



Muvi Universal Pole/Bar Mount
VCC-A017-UPM

**NO PROOF
NO GLORY.™**

veho.®

veho-muvi.com