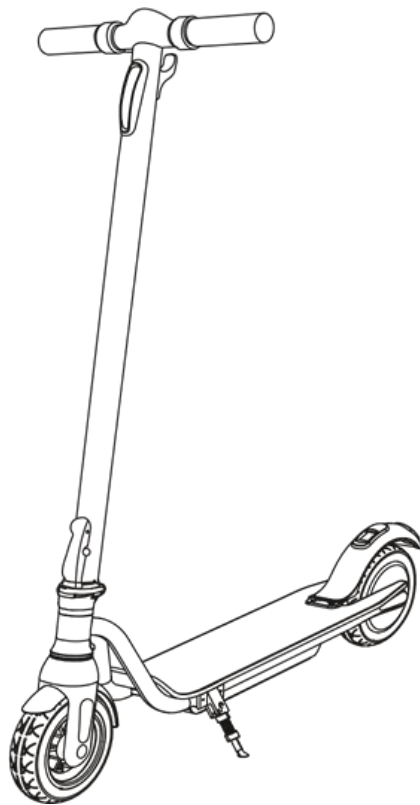


electriciQ

USER MANUAL



ELECTRIC SCOOTER

E-SC10

Thank you for choosing electriciQ

Please read the manual before using this scooter and keep it safe for future reference.

Visit our page www.electriciQ.co.uk for our entire product range

CONTENTS

SAFETY WARNINGS	3
SCOOTER DIAGRAM	5
ASSEMBLY	6
FOLDING AND UNFOLDING THE SCOOTER	7
DISPLAY OVERVIEW	8
FIRST USE	9
HOW TO RIDE	9
MAINTENANCE	9
STORAGE	10
TECHNICAL SPECIFICATIONS	10
SUPPORT	11

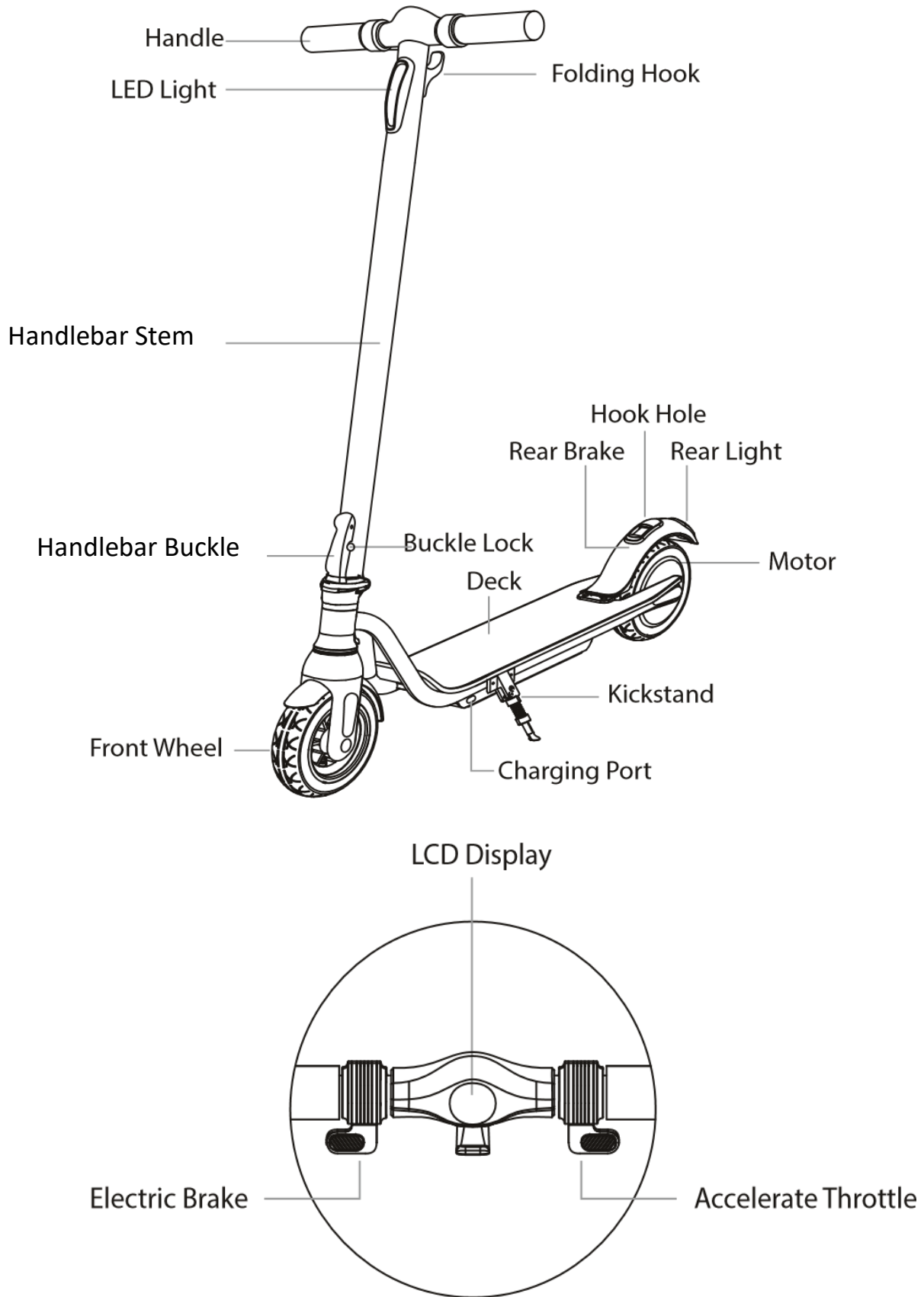
SAFETY WARNINGS

- Carefully read the user manual before use to avoid the risk of injury. Keep the user manual safe for future reference.
- The scooter can only be used by people aged 14 years old and over. Persons with reduced physical, sensory or mental capabilities or who lack experience and knowledge can also use this scooter if they are supervised, or have been given the correct instructions concerning the use of the scooter and understand the hazards involved.
- Do not leave children unattended with the scooter.
- Cleaning and user maintenance must not be performed by a child under the age of 14 unless supervised by an adult.
- The user is responsible for all consequences from improper use of the scooter.
- The scooter is for personal use only, and must be operated in accordance with current local legislation.
- Only one person can use the scooter at a time.
- Inspect the scooter before use. Do not attempt operation if any damage is found or suspected.
- Keep fingers clear of the folding mechanism when folding or unfolding the electric scooter.
- Do not allow children to fold or unfold the scooter.
- This scooter is to be ridden responsibly. If you lose control you could cause serious injury.
- Wear suitable clothing and footwear, including, but not limited to: flat shoes, helmet, knee protectors and elbow protectors.
- Do not ride after consuming alcohol, or under the influence of drugs.
- Verify that use of the scooter is allowed in the area you wish to ride.
- Do not use the scooter at night, or when visibility is low.
- Always check the battery level using the display. If the battery is low, the scooter might stop suddenly and cause injury.
- The scooter is designed to be used on smooth flat ground.
- Do not use the scooter in wet conditions, including snow, mud and ice.
- Maintain a slow speed if travelling downhill. Use both brakes together to stop from high speeds.
- Do not carry children while using the scooter.
- This scooter is not a toy.
- The maximum speed and range will be dependant on the weight and size of the user, as well as environmental conditions, and driving style.
- Pictures and information in this manual may vary from the product, due to continuous product improvement.

BATTERY SAFETY

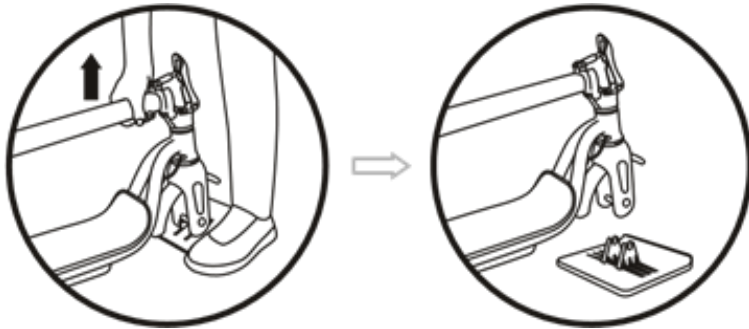
- The scooter comes supplied with a lithium battery. Care must be taken with the battery and charging to maintain its lifespan.
- Do not expose the scooter or battery to naked flames or extreme heat.
- Do not expose the scooter or battery to extreme cold.
- Do not allow moisture to enter the battery compartment or charging port.
- Only use the provided charger.
- Do not overcharge the battery or leave unattended whilst charging.
- The battery must be removed if disposing of the product.
- The battery is to be disposed of safely.
- Lithium batteries are considered dangerous goods. Check your countries laws on transportation and use.

SCOOTER DIAGRAM



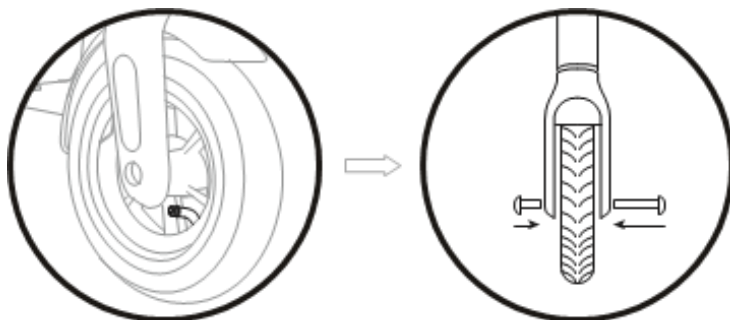
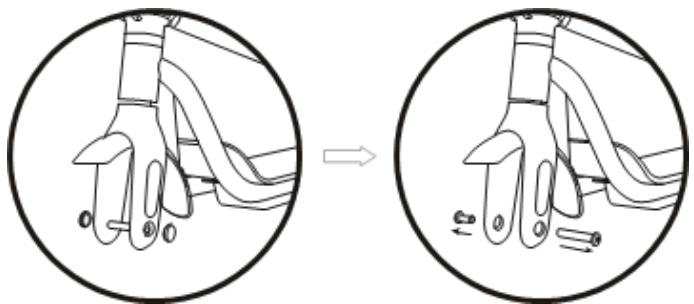
ASSEMBLY

Ensure that the mini scooter is fully assembled before operating.



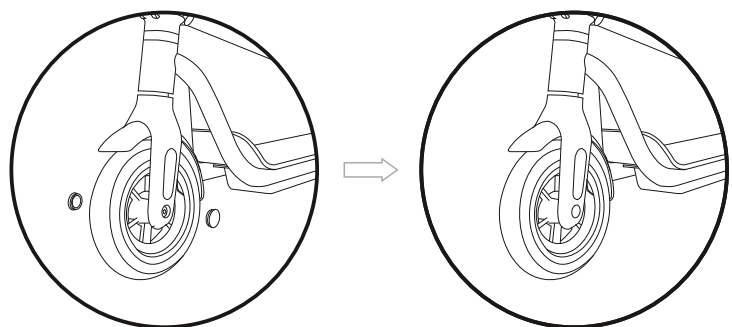
Step on the deck of the unit and lift the handlebar stem firmly to detach from the deck.

Remove the rubber plugs on both sides of the front wheel forks, then unfasten the front axle with the two 6mm wrenches provided.

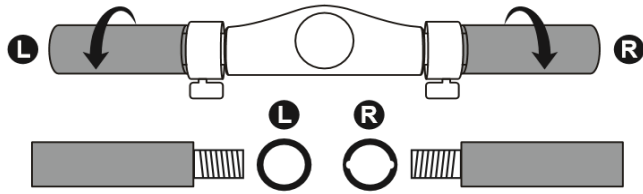


When installing the front wheel pay attention to the direction of the tread, ensuring it matches the image with the valve on the right. Once you have confirmed it is the correct way round, the front axle can then be tightened.

Replace the rubber plugs on both sides of the front wheel forks.

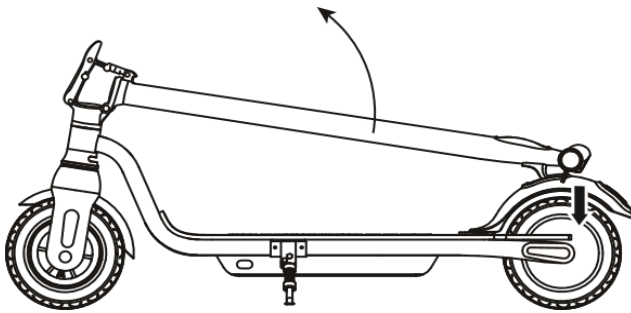


HANDLE ASSEMBLY



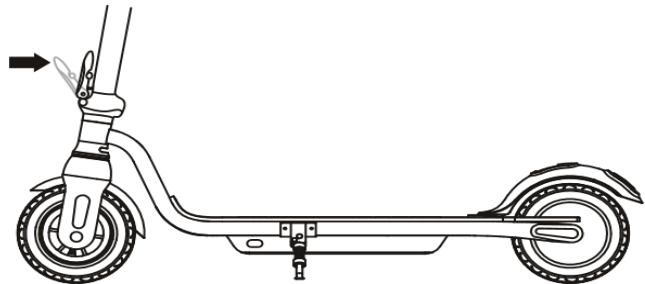
Fully tighten the handlebars on to each side of the handlebar stem, Ensuring that the right handle is attached to the right side, and the left handle is attached to the left.

UNFOLDING YOUR SCOOTER

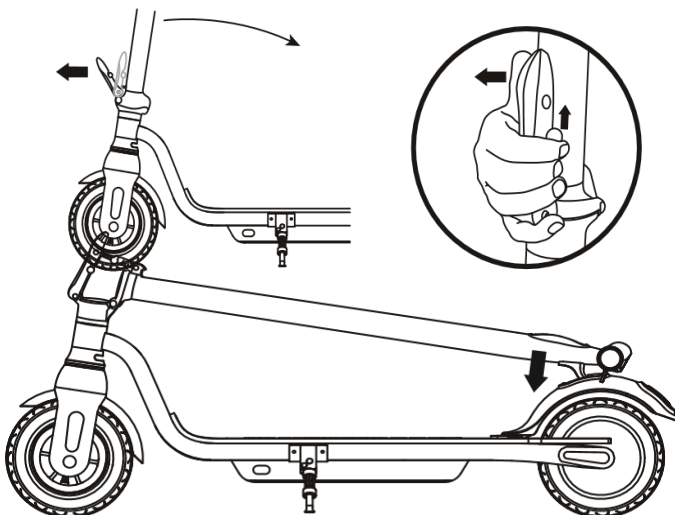


Lift up the handlebar stem until the folding hook releases from the hook hole on the back fender.

Fully raise the handlebar stem, then Lock the handlebar stem into place using the handlebar buckle. Ensure a clicking sound is heard and that the buckle is secure.

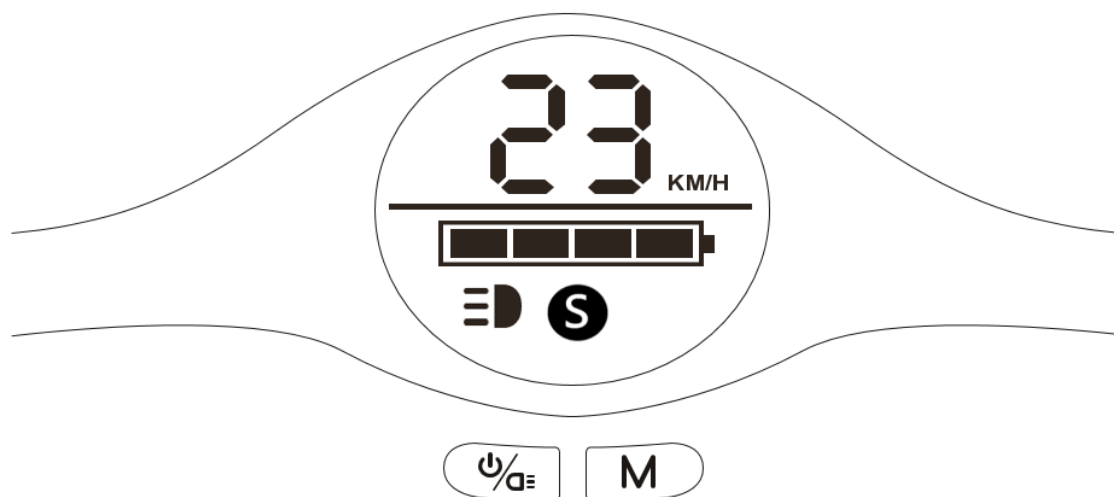











FOLDING YOUR SCOOTER



Carefully lift up the handlebar buckle, and pull it away from the handlebar stem. Then gently lower the handlebar stem until the folding hook is fixed securely into the hook hole.

DISPLAY OVERVIEW



	POWER BUTTON	Press and hold for 3 seconds to turn the scooter ON or OFF.
	HEADLIGHT	Press the power button twice to turn on the headlight. Turn it off by pressing the power button twice. The headlight symbol will illuminate on the display when the lights are on.
	MODE BUTTON	When the scooter is on, press the MODE button to change between the speed modes: Low speed, Medium speed and high speed. The currently selected mode will be shown by the colour of the speed symbol.
	SPEED INDICATOR	The colour of the SPEED INDICATOR shows the mode currently selected. WHITE: Low speed mode, max speed is 10km/h. YELLOW: Mid speed mode, max speed is 20km/h. RED: High speed mode, max speed is 25km/h.
	BATTERY LEVEL	The display will indicate the current battery level. You should avoid riding the scooter when the battery level drops below 25%. <div style="display: flex; justify-content: space-around; align-items: center; margin-top: 10px;"> <div style="text-align: center;">  <p>75%-100%</p> </div> <div style="text-align: center;">  <p>50%-75%</p> </div> <div style="text-align: center;">  <p>25%-50%</p> </div> <div style="text-align: center;">  <p>0%-25%</p> </div> </div>

FIRST USE

IMPORTANT: Before using the scooter for the first time, fully charge the battery. After turning on the scooter, check the battery power on the display and verify that all lights are working.

- Remove the protective cover from the charging port on the scooter.
- Ensure that the charging port is dry and not damaged before inserting the charger into the port. (Refer to the scooter diagram for location).
- When the indicator on the charger is red, the scooter is charging.
- The indicator light on the charger will turn green when the battery is fully charged. This usually takes 5-6 hours.
- Do not over charge as long-term battery life may be affected. Do not leave unattended while charging.
- When charging has completed, remove the charger and ensure that the protective cover is placed securely over the charging port.

HOW TO RIDE

IMPORTANT: Ensure all locking devices are secure and the scooter is stable before riding. This scooter is a toy and should be used as such. Do not ride in public areas. Adult supervision is required at all times.

1. Place one foot firmly on the deck, keeping your other foot on the ground for balance. Press the power button for 3 seconds to turn on the scooter.
2. Hold the handle bars with both hands and gently push the scooter forward. When you have gained a steady speed, gently press the accelerator and place both feet on the deck.
3. Press the mode button to change the max speed of the scooter. See display overview for more information.
4. Gently pressing the electronic brake and the rear brake will slow the scooter to a stop.
5. If the scooter displays that the battery is low, please charge the scooter. Do not run the scooter on low battery.
6. Press the power button for 3 seconds to turn off the scooter.
7. When the scooter has stopped, remove your feet one by one.

MAINTENANCE

The scooter requires routine cleaning and maintenance.

- Before any work is carried out on the scooter, ensure that the charging cable is not connected and that the scooter is powered off.
- To clean the scooter, wipe the exterior with a soft damp cloth, then dry immediately.
- The exterior of the scooter is splash proof with an ingress rating of IPX4. The scooter is water resistant, but not waterproof, never submerge the scooter, and do not ride in heavily dusty areas. Care should be taken to avoid mud, large puddles, avoid adverse weather.
- Do not allow water to get inside of the scooter. There is a high risk of the internal electronics becoming permanently damaged.
- The tyres on the scooter must be regularly checked for damage.

STORAGE

- To protect the battery, ensure it is charged for at least an hour before storage. If you plan on storing the scooter for a prolonged period, the scooter should be charged every 2 months to avoid deterioration of the battery. Do not store the scooter at less than 7°C or above 25°C
- Keep the scooter inside its own packaging, or cover it to prevent dust build up.
- Keep the scooter indoors at all times when not in use.

TECHNICAL SPECIFICATIONS

Model name	E-SC10
Maximum loading	120 kg
Maximum speed	25km/h
Maximum Range	16km
Motor power	250W
Climbing gradient	20°
Power supply	AC 110-240V, 50/60Hz
Body dimensions	1065 x 430 x 1180 mm
Folded body dimensions	1065 x 430 x 480 mm
Net weight	11.9 kg
Tyre type	Front air tyre, back motor is solid tyre.

BATTERY SPECIFICATIONS

Battery	5.0 Ah 36V Lithium Battery
Charging time	3.5 hours
Voltage	36 V
Initial Capacity	5000 mAh
Working Temperature	-15 °C - 40 °C
Charging Temperature	0 °C - 40 °C
Storage Time	6 months
Storage Temperature	-20 °C - 25 °C
Storage Humidity	5 % -95 %

electriQ UK SUPPORT.

0330 390 3061

Office hours: 9AM - 5PM Monday to Friday

www.electriQ.co.uk

Unit J6, Lowfields Business Park

Lowfields Way, Elland

West Yorkshire, HX5 9DA

PRODUCT DISPOSAL

Do not dispose this product as unsorted municipal waste. Collection of such waste must be handled separately as special treatment is necessary.

Recycling facilities are now available for all customers at which you can deposit your old electrical products. Customers will be able to take any old electrical equipment to participating civic amenity sites run by their local councils.

Please remember that this equipment will be further handled during the recycling process, so please be considerate when depositing your equipment.

Please contact the local council for details of your local household waste collection service



EU DECLARATION OF CONFORMITY

Company Name: Buy It Direct
Postal Address: Unit J6, Lowfields Way
Elland, West Yorkshire
Postcode: HX5 9DA
Telephone Number: 0871 620 1057
E-mail Address: Compliance@BuyItDirect.co.uk

This declaration of conformity is issued under our sole responsibility and belongs to the following product:

Type of product: Electric Scooter
Model Number: E-SC10
Brand: electriQ
Object of Declaration: electriQ Electric Scooter



The object of the declaration described above is in conformity with the relevant Union harmonisation legislation:

Low Voltage Directive 2014/35/EU
Machinery Directive 2006/42/EC
EMC Directive 2014/30/EU
RoHS Directive 2011/65/EU

Relevant harmonised standards used or other technical specifications in relation to which conformity is declared:

SAFETY	EN ISO 12100:2010	EN 62233:2008
	EN 60335-1:2012+A14	EN 62471:2008
EMC	EN 61000-6-3:2007+A1	EN IEC 61000-6-1:2019
RoHS	2015/863/EU	

Authorised Signature



Richard Leach
Compliance and Quality Manager
13th November 2020